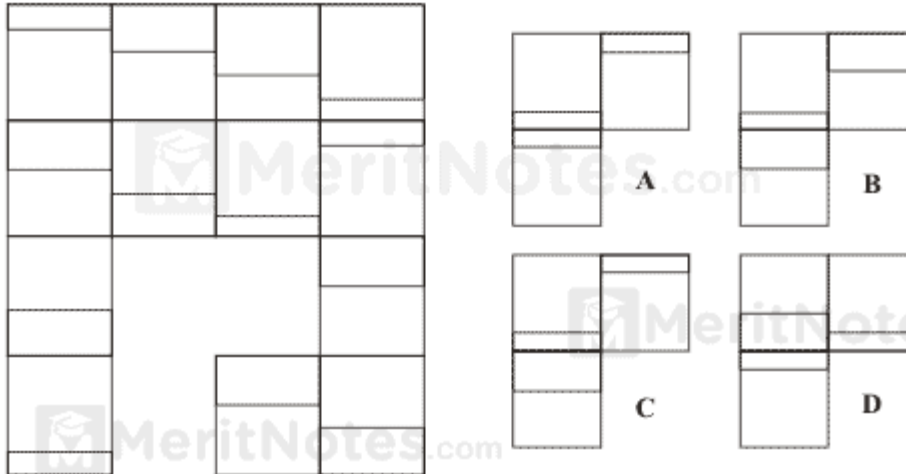


## Hard Sequence Puzzles Questions and Answers Pdf

Questions : 1

**Which is the missing section?**

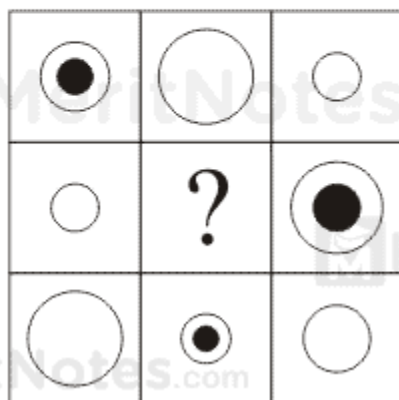


Ans: A

Each line across and down contains one each of the lines in a different position ( the lines are moving downwards one notch at a time; when they reach the bottom they return to the top position at the next stage.

Questions : 2

**Draw the contents of the middle tile in accordance with the rules of logic already established**



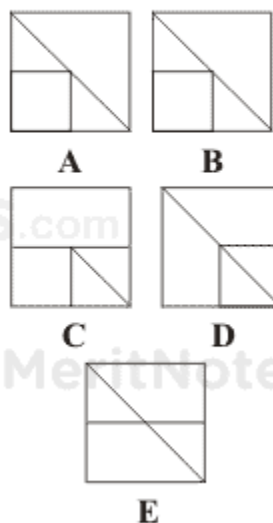
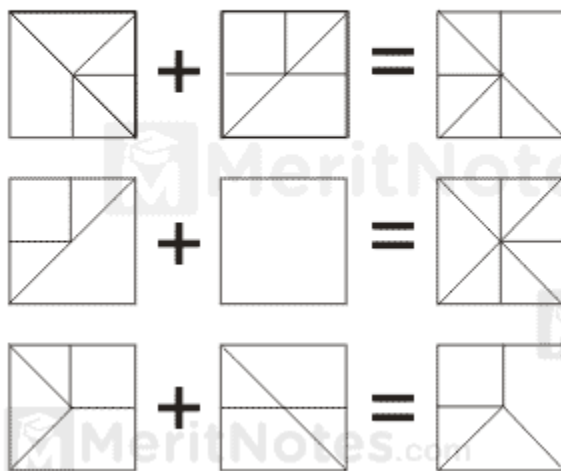
Ans:



Each line across and down contains a circle of each size and a black dot.

Questions : 3

**Which is the missing square?**

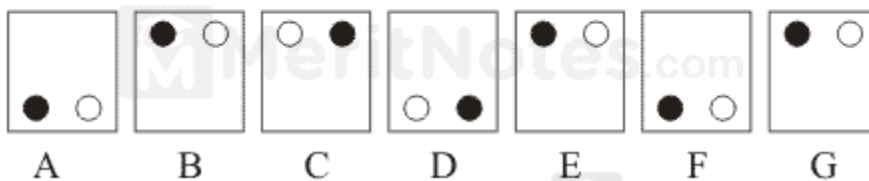


Ans: A

Lines from the first two boxes are carried forward to the third box, except when two lines appear in the same position, in which case they are cancelled out.

Questions : 4

**Which does not belong in this sequence?**

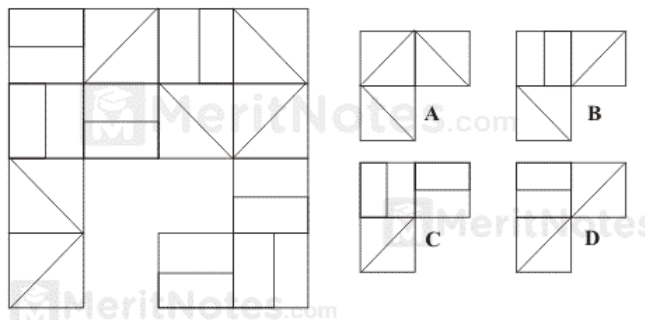


Ans: E

The black dot is moving one corner clockwise at each stage and the white dot is moving one corner anti clockwise at each stage.

Questions : 5

**Which is the missing section?**



Ans: B

So that each horizontal and vertical line contains one of the four different lines.

[meritnotes.com](http://meritnotes.com)