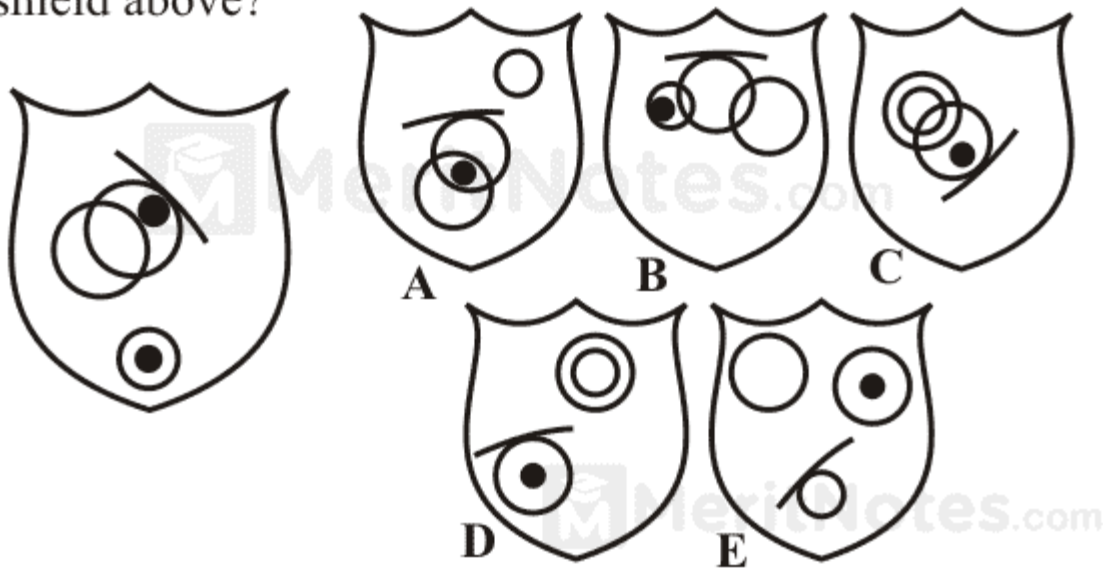


Puzzles Questions and Answers for Bank Exams Pdf

Questions : 1

To which shield below can a dot be added so that both dots then meet the same conditions as in the shield above?

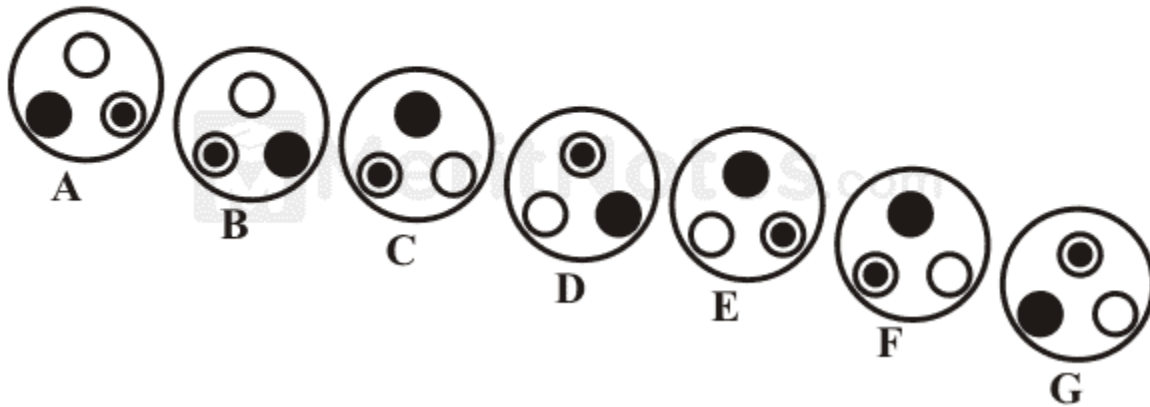


Ans: D

So that one dot is in the small circle only and the other dot is in the circle with the line above it.

Questions : 2

Which does not belong in this sequence?

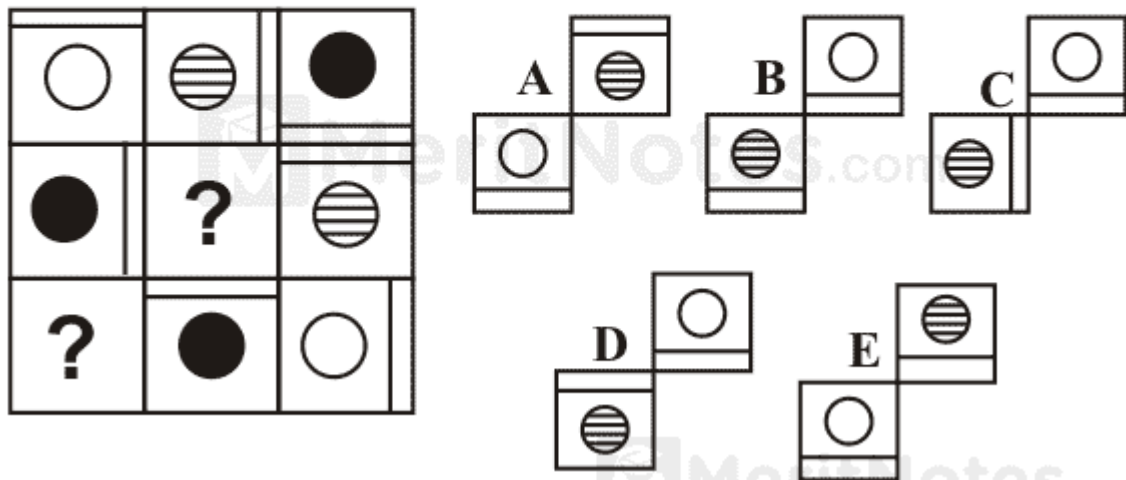


Ans: C

Working clockwise the dots swap places two at a time, starting with the black circle and the circle with the dot.

Questions : 3

Which are the two missing squares?

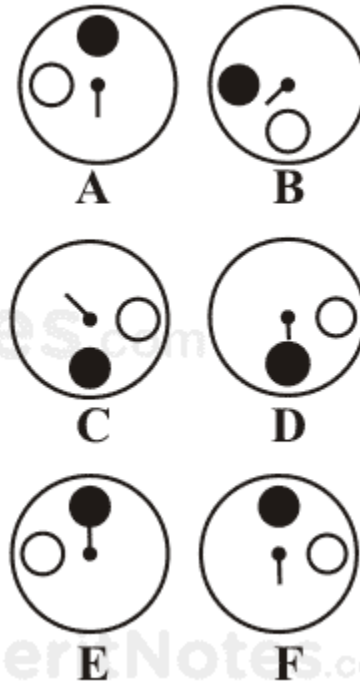
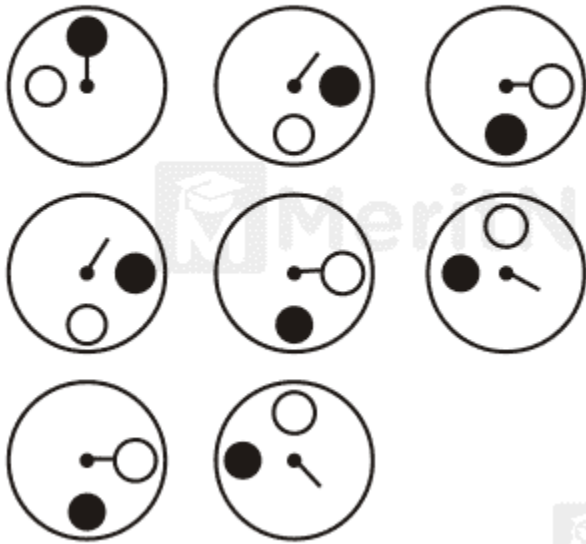


Ans: B

Each row of three tiles across and down contains a white dot, striped dot and black dot, and a line in each of three positions.

Questions : 4

Which is the missing square?



Ans: A

Looking across and down the line moves 45° clockwise, the black dot moves 90° clockwise and the white moves 90° anti clockwise.

Questions : 5

What comes next?



A



B



C



D

Ans: D

The large circle moves two clockwise, the small white circle moves two anti clockwise, the triangle moves one anti clockwise and the black circle moves one anti clockwise.

meritnotes.com